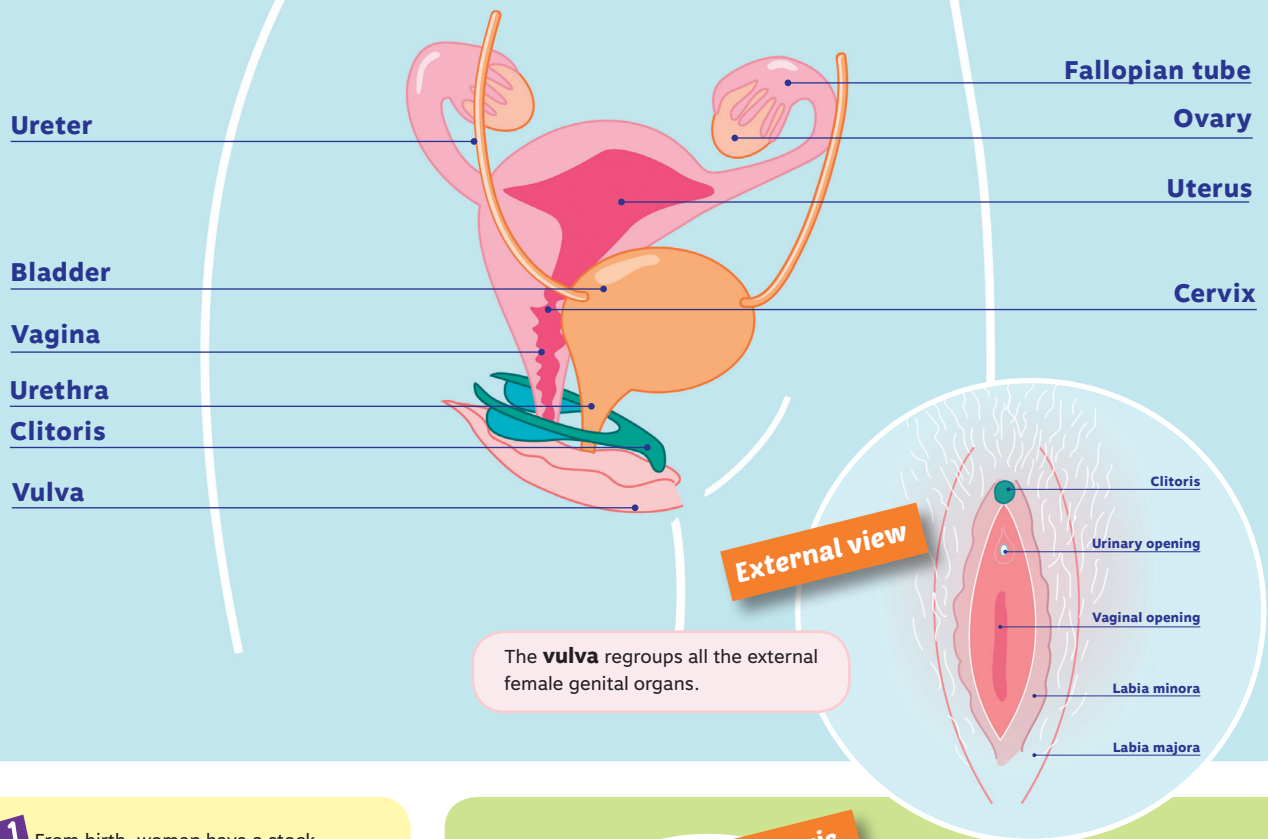


# How does the female reproductive system work?

When **egg** production is triggered in the **ovaries**, **periods** start to appear: that's **puberty**.

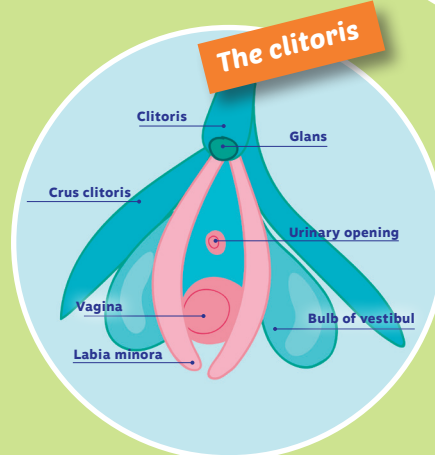
## Diagram of the female reproductive system



**1** From birth, women have a stock of **eggs** present in their **ovaries**. Fertilisation occurs when one of the eggs matures and meets a sperm cell.

**2** The **uterus** is the organ where the embryo develops. Every 28 days, starting with puberty, some of the mucous membrane lining the uterus is destroyed. This appears as blood flow from the vagina: otherwise known as periods.

**3** During **ovulation**, a mature egg is released from the ovary. This phenomenon takes place from puberty through to menopause roughly every 28 days. This varies greatly from one woman to the next.



**4** The **clitoris** has a fundamental role in sexual excitement and sexual behaviour. Its visible part is located at the top of the inner labia with a protrusion that can measure between 7 and 10 millimetres in diameter. Its invisible part surrounds the vagina and urethra via 2 crus clitoris hat are 10 centimetres long. It is an erectile organ which contributes to sexual desire and orgasm.